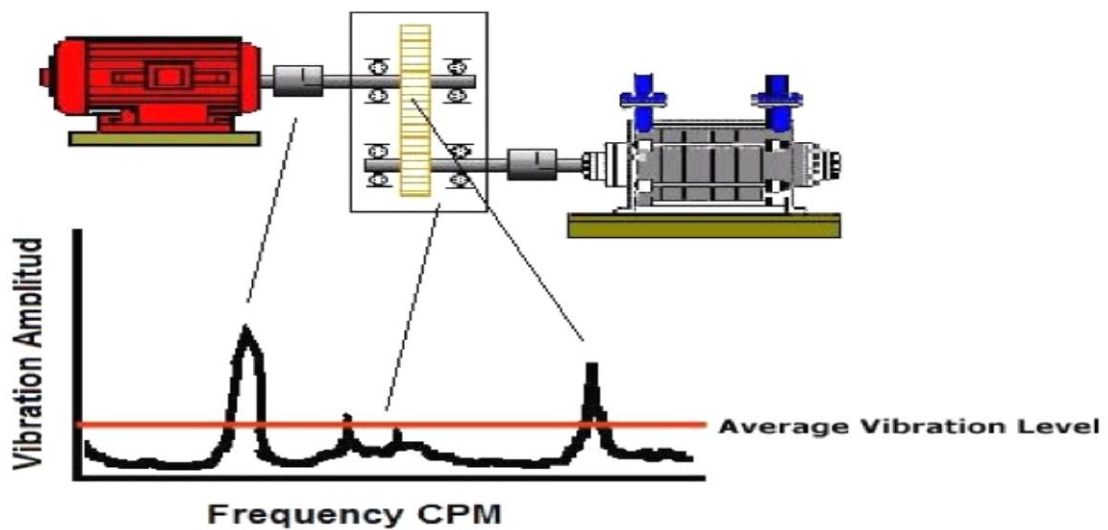
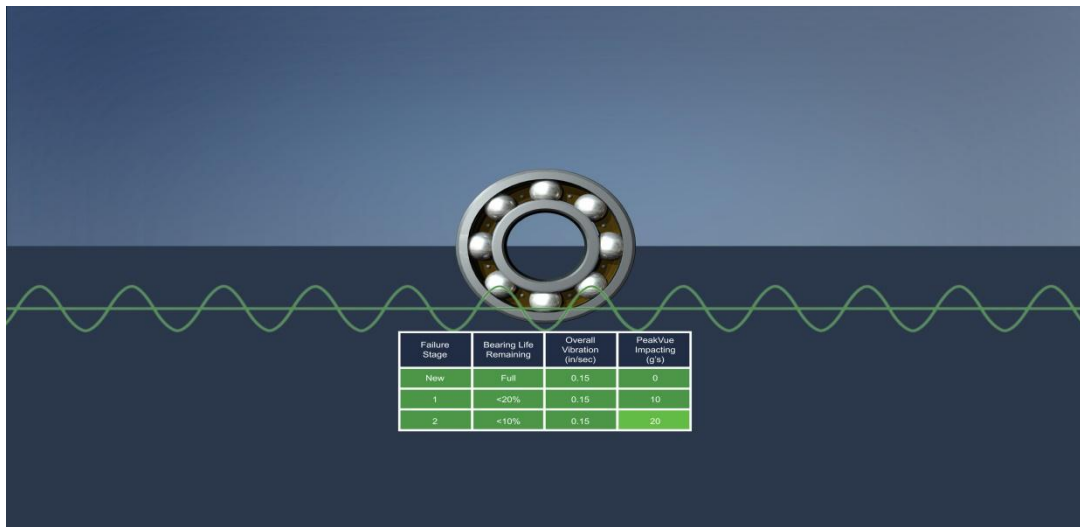




Condition Monitoring Case Study



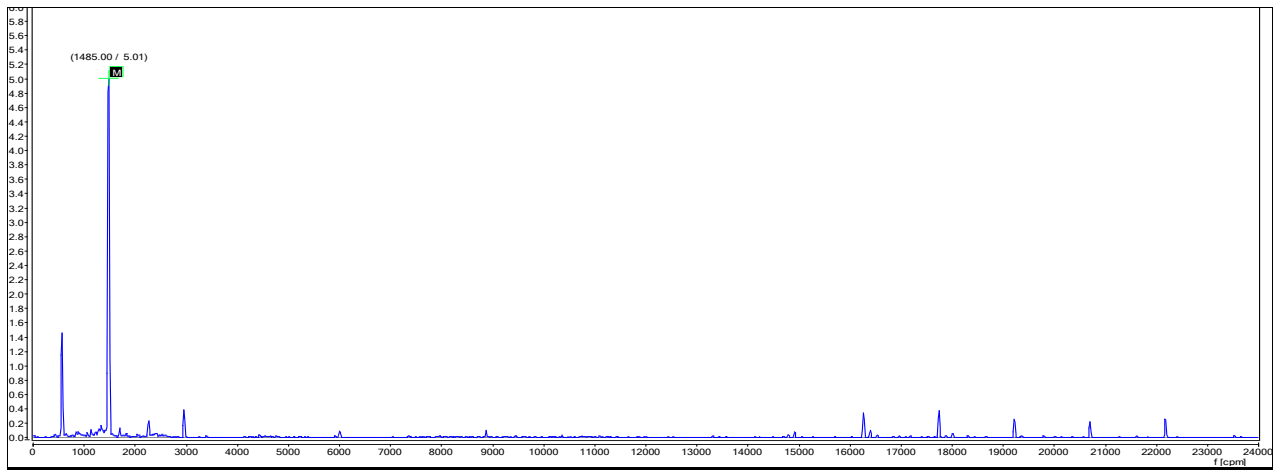


Vibration Analysis Report

Equipment Name: HUSKY MACHINE-02	Equipment Class : IV
Driver Capacity : SERVO MOTOR : 158 KW	Area: Production
Driven Type : Gear box : Helical	Running Hours : 24 Hrs
Connected Drive : Coupling	Survey Type : Off Line Monitoring with PRUFTECHNIK ANALYZER

Test Point	Vibration Reading Velocity in mm/Sec			Temperature	CTRL Sound
	Horizontal	Vertical	Axial	Deg ° C	Ultrasound
Vibration Reading Date on (29.11.2022)					
EXTRUDER SERVO MNDE	1.2	1.3	1.5	41	2-4
EXTRUDER SERVO MDE	1.1	1.1	1.3	42	2-4
Vibration Reading Date on (26.12.2022)					
EXTRUDER SERVO MNDE	3.8	4.2	1.9	41	4-6
EXTRUDER SERVO MDE	2.2	2.5	1.4	42	4-6
GEAR BOX DE	3.8	2.8	1.4	61-63	2-4
GEAR BOX NDE	1.3	1.4	2.4	55-58	2-4

EXTRUDER SERVO MNDE SPECTRUM



OBSERVATION:

- The maximum overall vibration amplitude measured on the EXTRUDER SERVO MNDE is 4.2 mm/sec Vertical.
- Mold-22.2 grams
- Motor Load Level Drive input-R-111.5 Y-108.6 B-117.3
- Motor Load Level Drive Output- R-206 Y-203 B-202
- Screw Rpm-43

RECOMMENDATIONS:

- Overall Vibration & Ultrasound level slight increased compare to last reading, also Vibration spectrum shows bearing frequency at motor & gearbox side. Inspect the motor both bearings & coupling condition.
- Daily trend monitor gear box temperature & sound level.

Motor & Gearbox Images:



