



# APPLICATION - 1



1	Company	:	LEADING COMPANY
2	Manufactures	:	PAPER (1000 Tons/Day)
3	Department	:	Chemical Recovery
4	Application	:	RLK -2 Oil Heater Condensate drain Line
5	Steam Consumption	:	75 kg/hr
6	Steam Temp	:	180 degree C
7	Pressure	:	12 kg/cm2
8	Problem	:	Heavy Steam Leak from the Steam Trap
9	Solution	:	TLV free float Steam Trap
10	Model	:	JH3S-B
11	Date of Supply	:	02.11.2011
12	Results	:	No steam Leak since 2 months and Furnace Oil Temperature Enhancement.



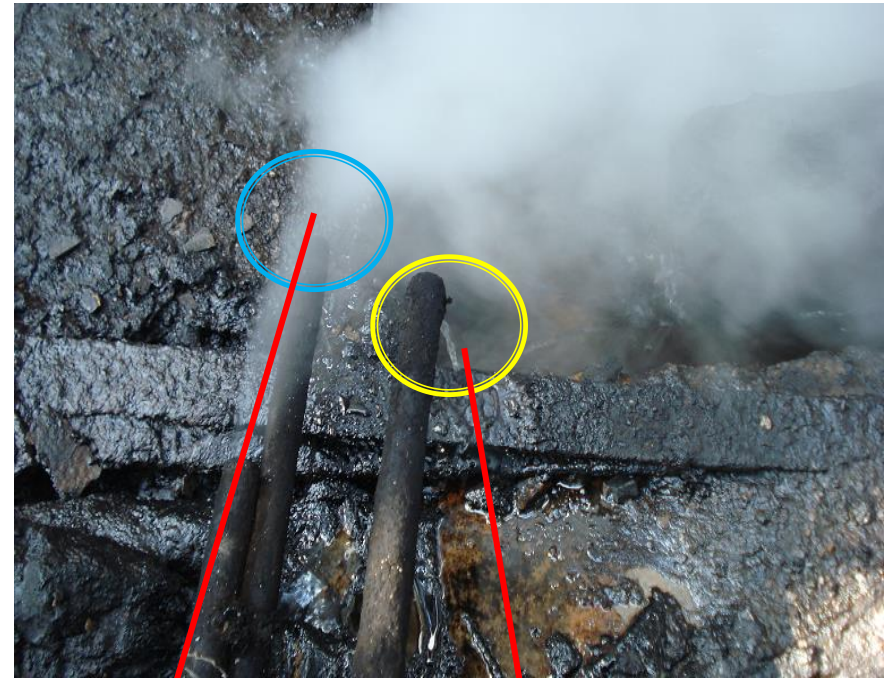


# Chemical Recovery

## RLK -2 Oil Heater Condensate Drain Line

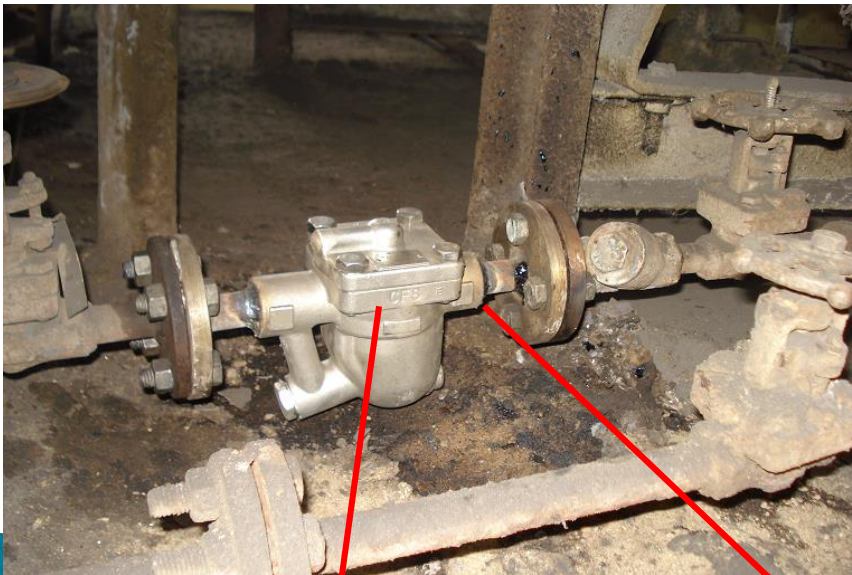


Area of TLV trap installation



Non-TLV trap :  
Blowing Steam

Condensate Discharge  
from TLV trap



Connection Type : Socket Weld

MODEL : JH3S-B





1	<b>Company</b>	:	<b>LEADING COMPANY</b>
2	Manufactures	:	PAPER (1000 Tons/Day)
3	Department	:	Chemical Recovery
4	Application	:	BHEL RECOVERY BOILER Oil Heater Condensate drain Line.
5	Steam Consumption	:	50 kg/hr
6	Steam Temp	:	180 degree C
7	Pressure	:	12 kg/cm <sup>2</sup>
8	<b>Problem</b>	:	<b>Heavy Steam Leak from steam trap</b>
9	Solution	:	TLV free float Steam Trap
10	Model	:	J7X (FCV410) Size : 25NB
11	Date of Supply	:	02.11.2011
12	<b>Results</b>	:	<b>No steam leak since 2 months and Furnace Oil Temperature Enhancement..</b>





# BHEL RECOVERY BOILER Oil Heater Condensate Drain Line.



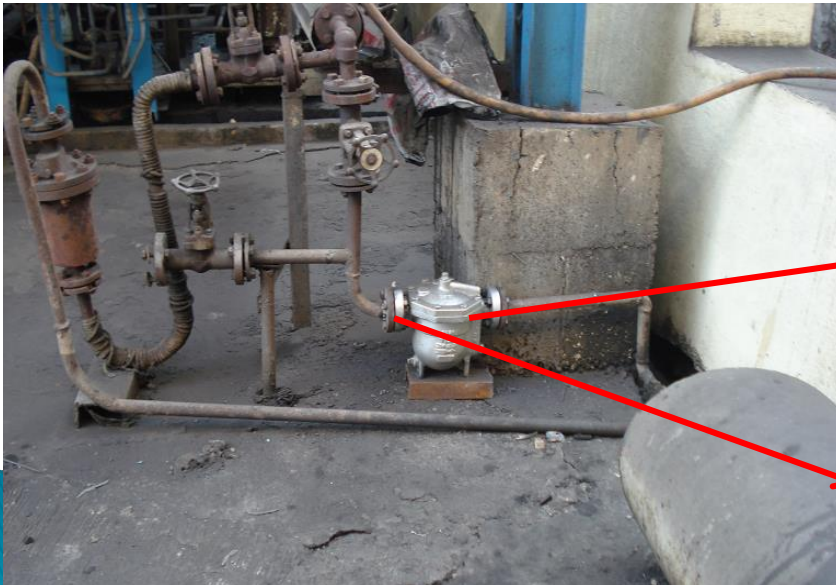
Before Installation Photos  
showing Steam Loss



After TLV Trap installation

TLV Trap  
Model : J7X (FCV410)  
Size : 25NB

Connection Type :  
**Flanged End**





1	Company	:	LEADING COMPANY
2	Manufactures	:	PAPER (1000 Tons/Day)
3	Department	:	Chemical Recovery
4	Application	:	BHEL RECOVERY BOILER Primary Air Heater Condensate drain Line
5	Steam Consumption	:	1000 kg/hr
6	Steam Temp	:	180 degree C
7	Pressure	:	12kg/cm <sup>2</sup>
8	Problem	:	Process requirement 160 Deg C Temp. But due to the heavy steam leak condensation choke-up, they are getting 100 – 120 Deg C Temp
9	Solution	:	TLV free float Steam Trap
10	Model	:	J7.2X (FCV410) Size : 50NB
11	Date of Supply	:	23.12.2011
12	Results	:	No steam Leak since installation of TLV traps. Due to this they are able to get the required temp of 155 to 160 Deg C.



# BHEL RECOVERY BOILER



## Primary Air Heater Condensate Drain Line



TLV Steam Trap

**Model** : J7.2X (FCV410)

**Type** : Free Float Steam Trap



**Connection Type** :

Flanged End